

Hampshire Partnership

20 March 2014

Karen Murray, Director

Neil Jones, Assistant Director Business Services

Culture, Communities and Business Services

Hampshire Broadband Programme

Hampshire County Council

Hampshire broadband programme
Faster broadband - getting Hampshire connected

Broadband

- Maps
- Join the campaign!
- See support in your area
- Programme of improvement
- Hampshire's allocation
- Rural Community Broadband Funding
- Self funding options
- Little London and Smannell
- Posters and leaflets
- Community Champions
- State aid - Public Consultation
- State aid public consultation - Superfast Extension Programme
- Open market review

Hampshire Broadband Maps

Commercial investment across Hampshire will see 80% of properties given access to superfast broadband services. Hampshire County Council has awarded a contract to BT Openreach to extend this coverage to 90% of properties by the end of 2015. The County Council understands how important access to better broadband is for residents in rural areas, and we are working on plans to extend coverage to at least 95% of premises by the end of 2017.

The Big Picture

This map shows a high level view, or forecast, of the 90% coverage area by the end of 2015. We will be publishing detailed maps for each phase as we enter deployment.

The map is divided into five colours.

- > Grey - This area will be upgraded by commercial investment (covers 80% of Hampshire's premises)

Programme to deliver 90% coverage by end of 2015 – includes 57,900 premises at superfast speeds

- > Green - Scheduled to be upgraded between January and June 2014 – please note that some properties in this area may be too far away to get superfast services
- > Orange - Scheduled to be upgraded between July and December 2014 – please note that some properties in this area may be too far away to get superfast services
- > Blue - Scheduled to be upgraded during 2015 – more detailed information will be available in 2015 – please note that some properties in this area may be too far away to get superfast services

Programme to extend coverage to 95% by 2017

- > Yellow - Area to be investigated as part of the programme to reach 95%+ by 2017

> Download a copy of the [Big Picture map](#) (1.3 MB)

Delivery will be broken down into 7 phases and we will publish details for each phase as they become available.

Phase Two

Phase Two of the Hampshire Superfast Broadband Programme will start in April 2014 and once completed, by the end of June 2014, more than 8,000 additional premises will be able to access superfast broadband speeds.

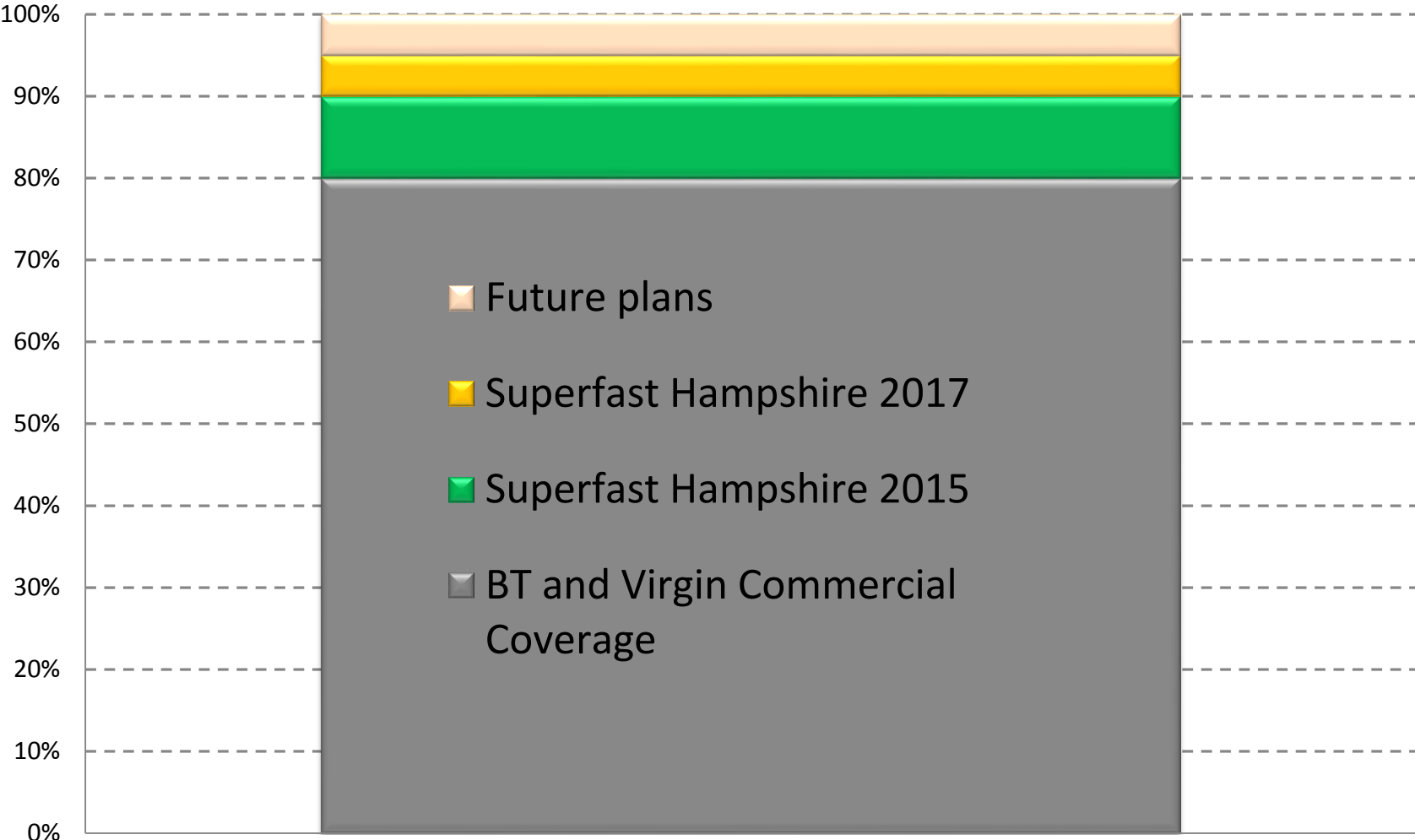
The programme will visit Ashurst, Basingstoke, Cadnam, Downton, Fawley, Gosport, Hythe, Lee-On-Solent, Lockerley, Long Sutton, Lynton, Lyndhurst, Milford-On-Sea, Odiham, Overton, Romsey, Totton, and West Wellow, and enable 56 roadside cabinets during the three months to June 2014.

Working with our neighbours in Wiltshire we have managed to bring forward delivery of superfast services for the villages of Woodgreen and Braemore in the New Forest by 12 months.

> Download a copy of the [Phase Two Map](#) (1.2 MB)

17:34
18/03/2014

Hampshire's Superfast Broadband Coverage



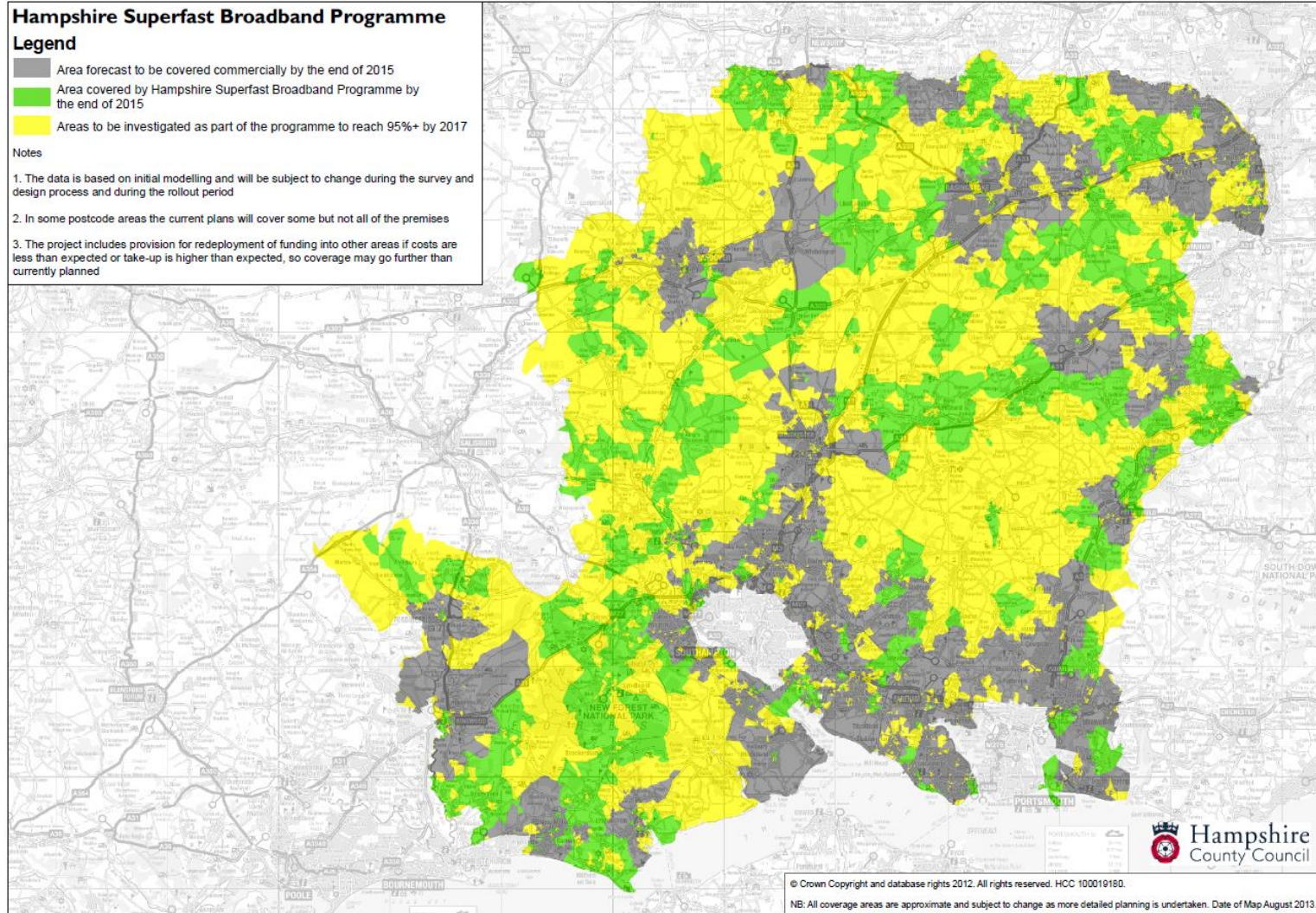
How does this look on a map?

Hampshire Superfast Broadband Programme Legend

- Area forecast to be covered commercially by the end of 2015
- Area covered by Hampshire Superfast Broadband Programme by the end of 2015
- Areas to be investigated as part of the programme to reach 95%+ by 2017

Notes

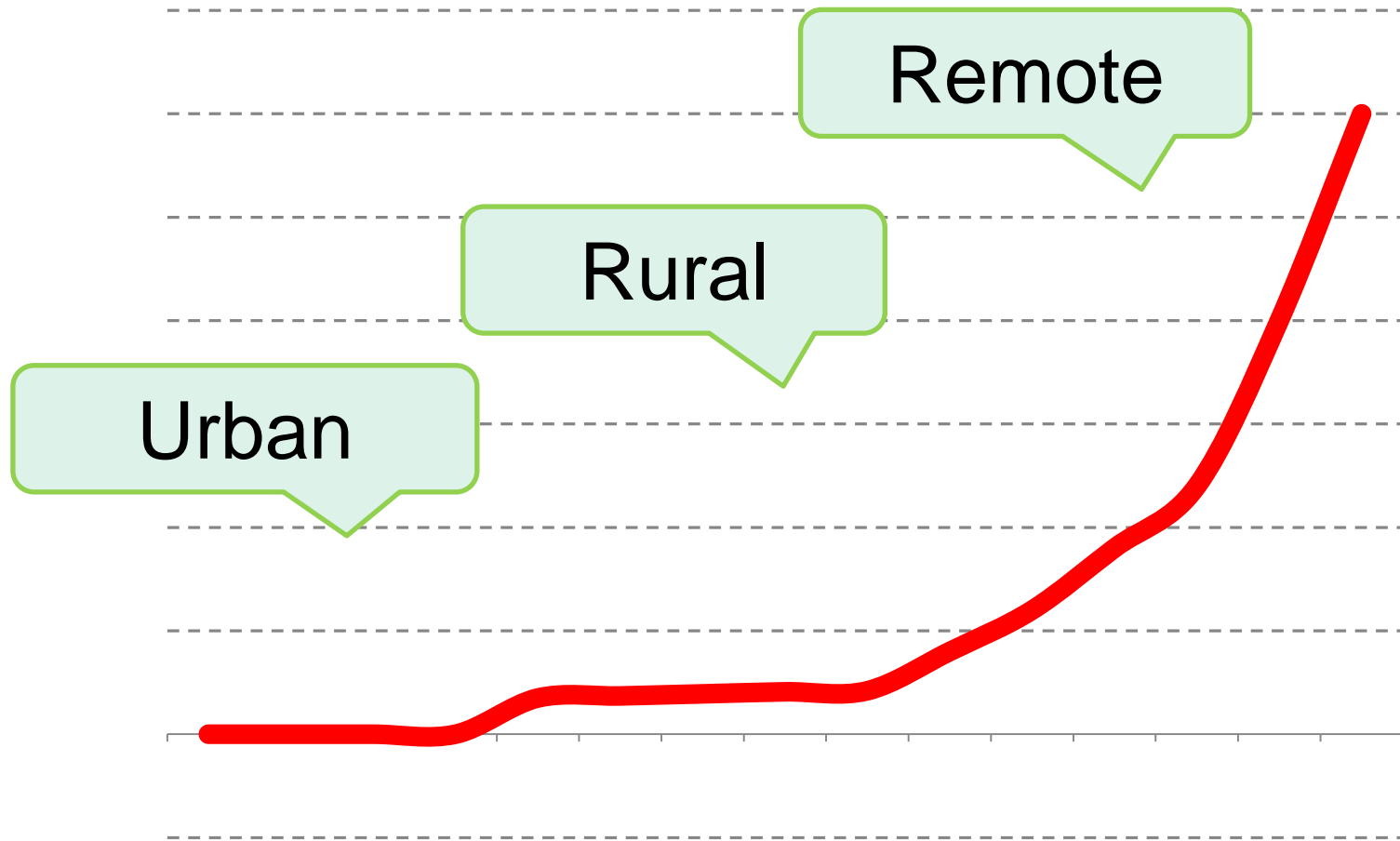
1. The data is based on initial modelling and will be subject to change during the survey and design process and during the rollout period
2. In some postcode areas the current plans will cover some but not all of the premises
3. The project includes provision for redeployment of funding into other areas if costs are less than expected or take-up is higher than expected, so coverage may go further than currently planned

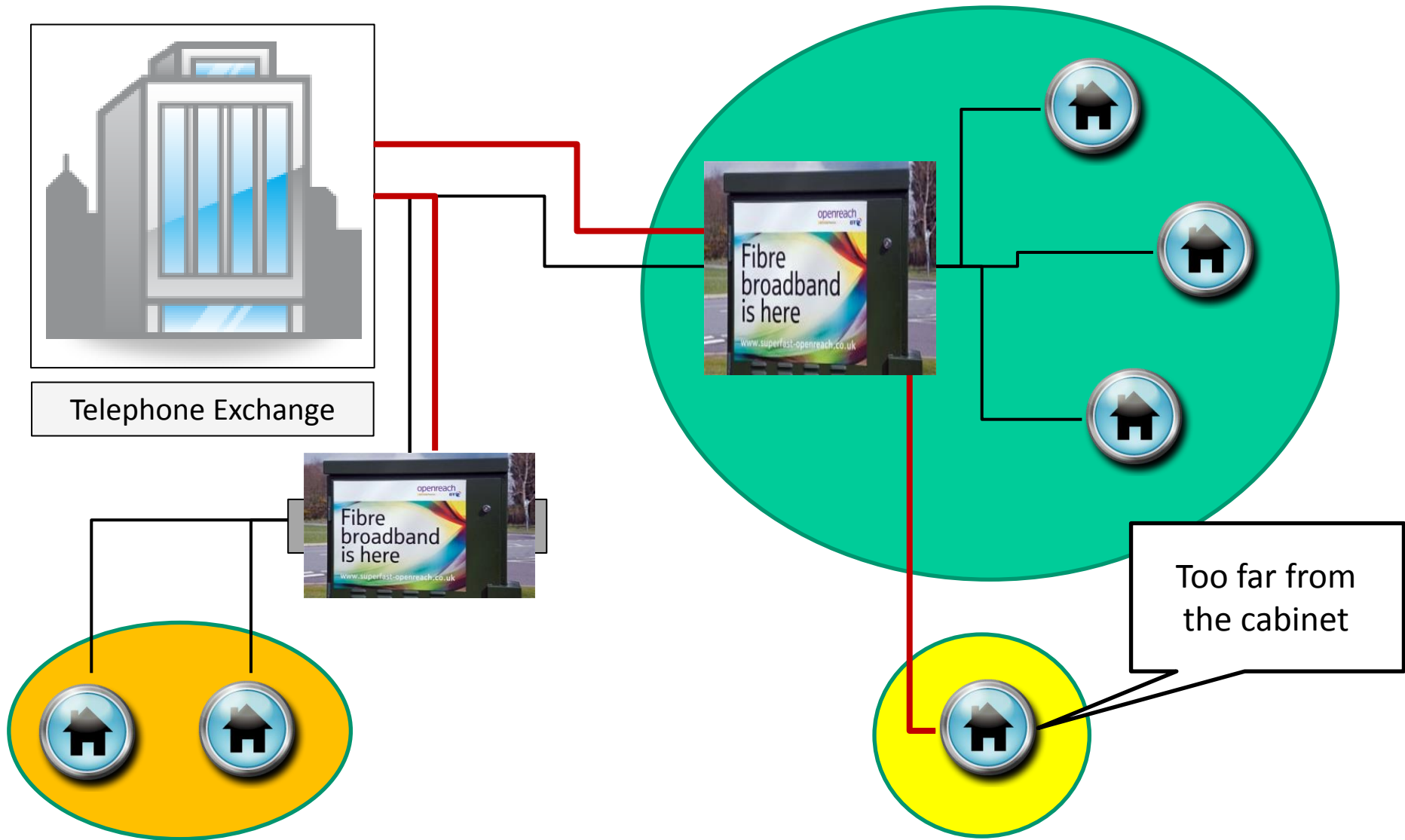


Frequently Asked Questions

- Who is getting it?
- Why am I not getting it?
- Why are they getting it?
- Why has only part of our village been included?

Illustrative public subsidy required per premise passed





The coverage model is based on reaching the largest number of premises with the funds available

Cabinets are ranked based on a number of criteria, including the cost of the upgrade and the number of premises that they serve.

Examples of Cabinet costs:

Cabinet A	The gap cost is £24,000 and it serves 300 premises, the cost per premise served is £80
Cabinet B	The gap cost is £24,000 and it serves 100 premises, the cost per premise served is £240

More Frequently Asked Questions

- What can I do if I'm not in the programme?

More Frequently Asked Questions

- What can I do if I'm not in the programme?
- When am I getting it?
- I have heard of the Superfast Extension Programme (SEP) – when will we know who is included?
- Who can I buy superfast services from?

Open competitive network

